

ESPRIT Payload Launch

A student project to design and launch a scientific payload to study the high latitude upper atmosphere as a cooperation between US students at Penn State University and Norwegian students at four universities in Norway.

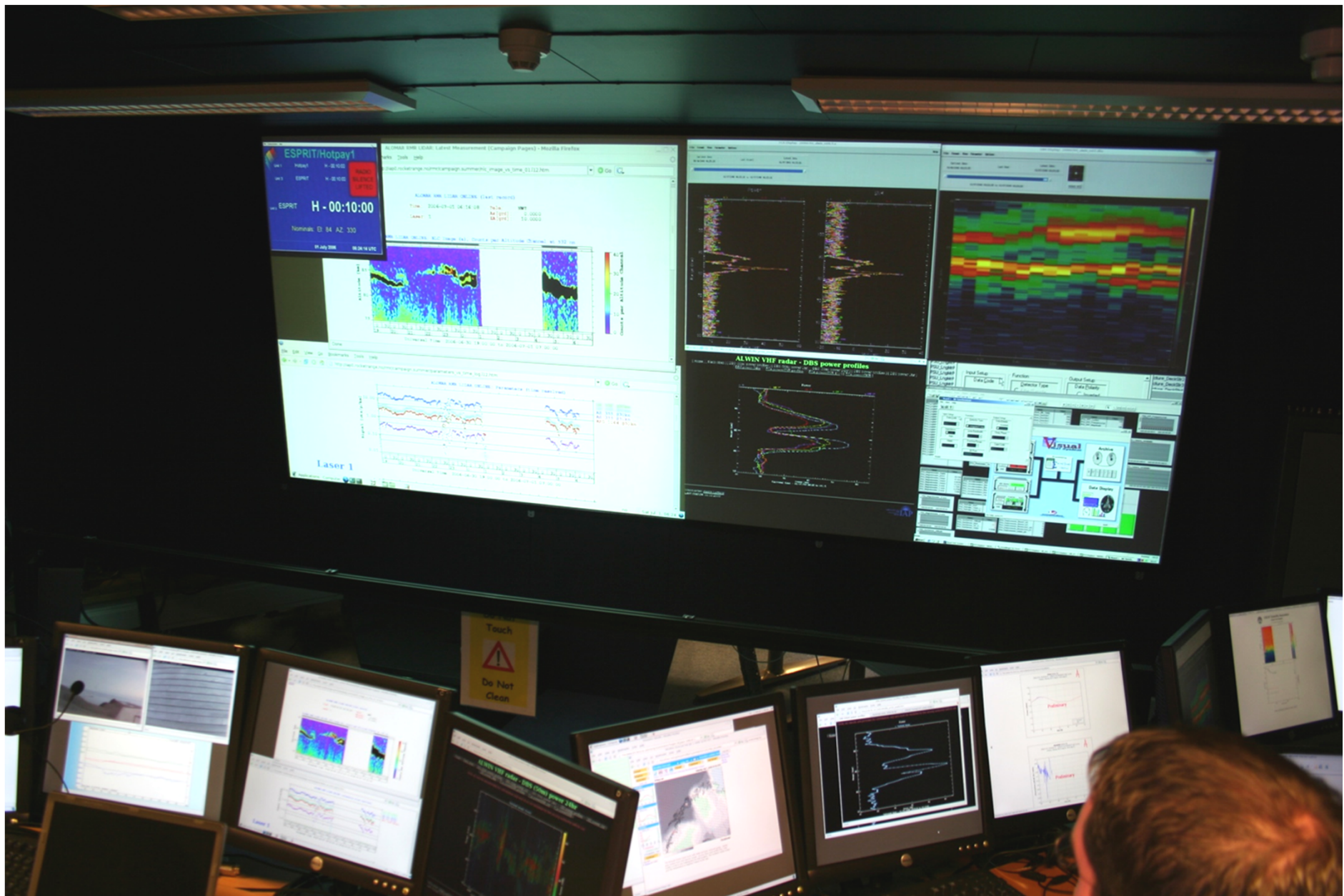
Launched at Andoya Rocket Range

1 July 2006 06:39:00 UT

T-10 min – T+30 min

Pictures by Prof. Russell Philbrick
ESPRIT Project Adviser

T – 10 min





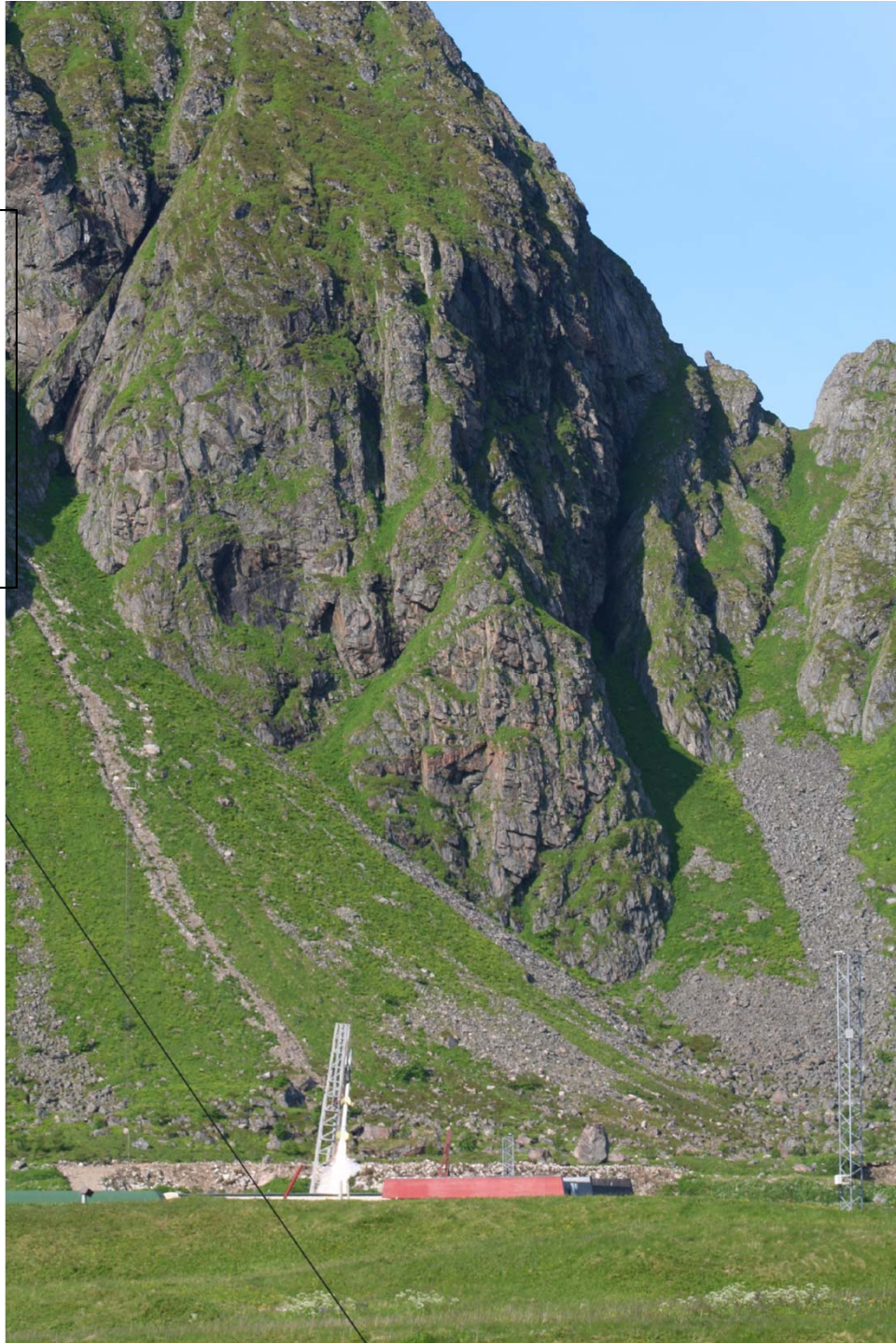
T – 3 min

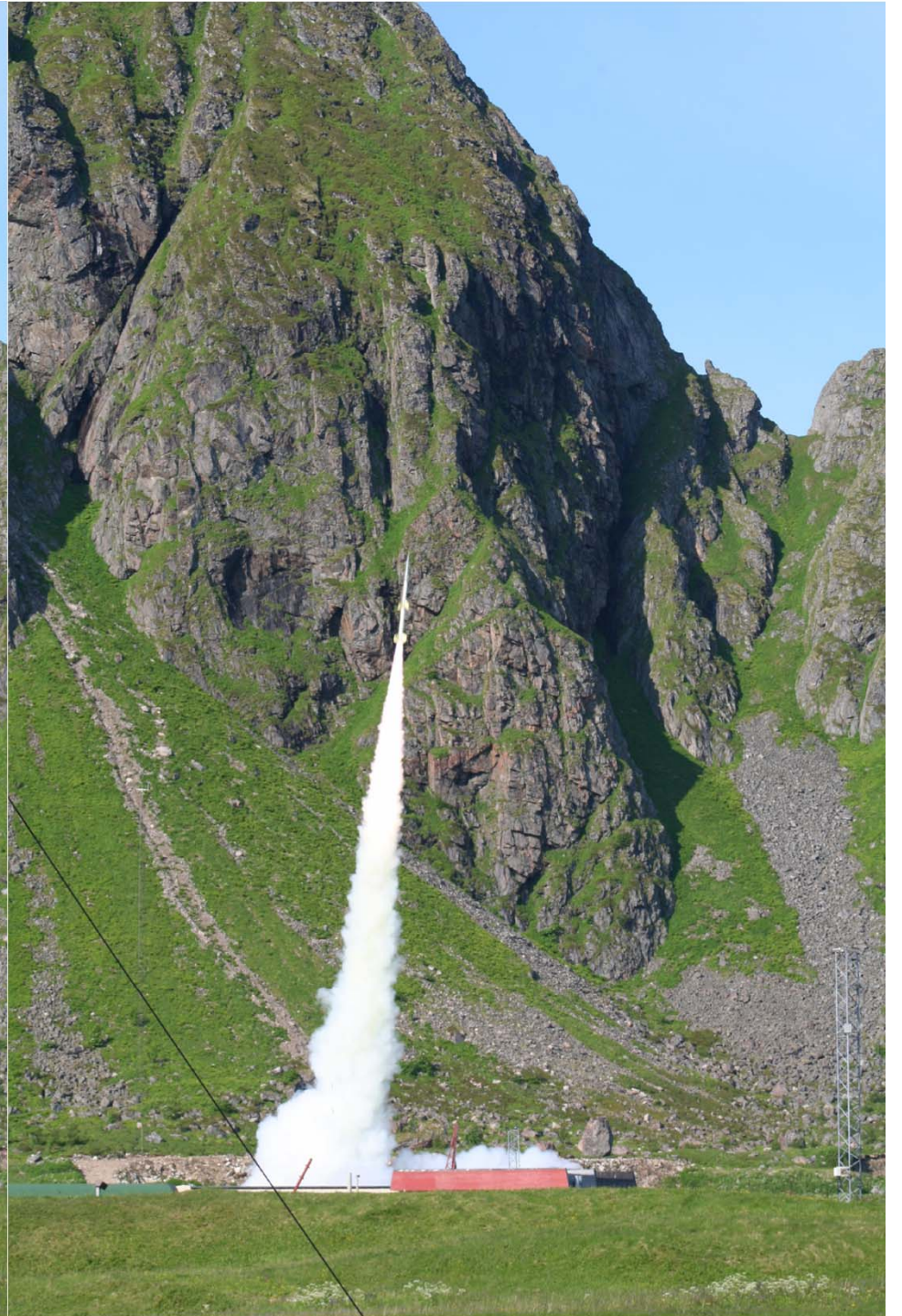


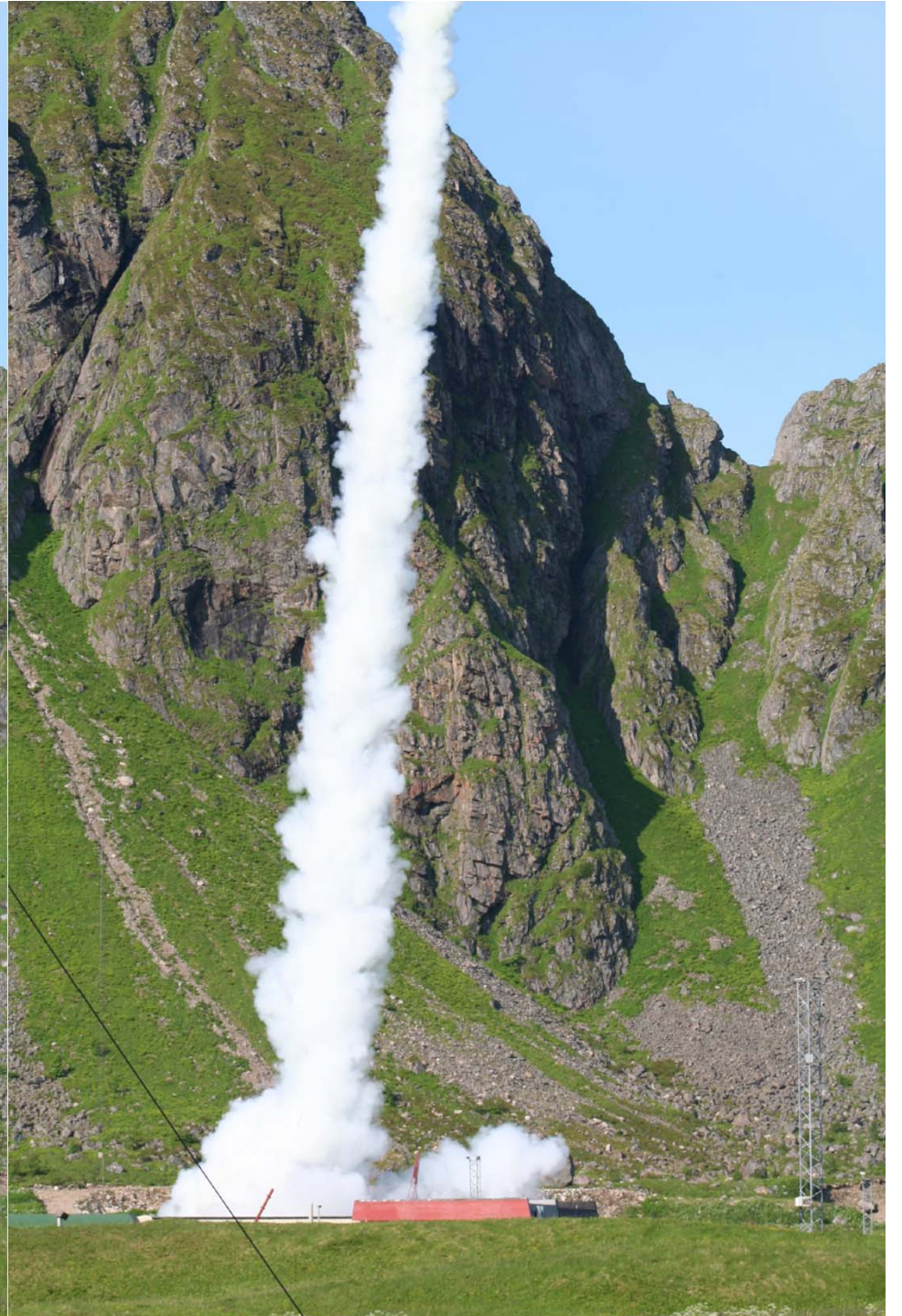
T – 2 min

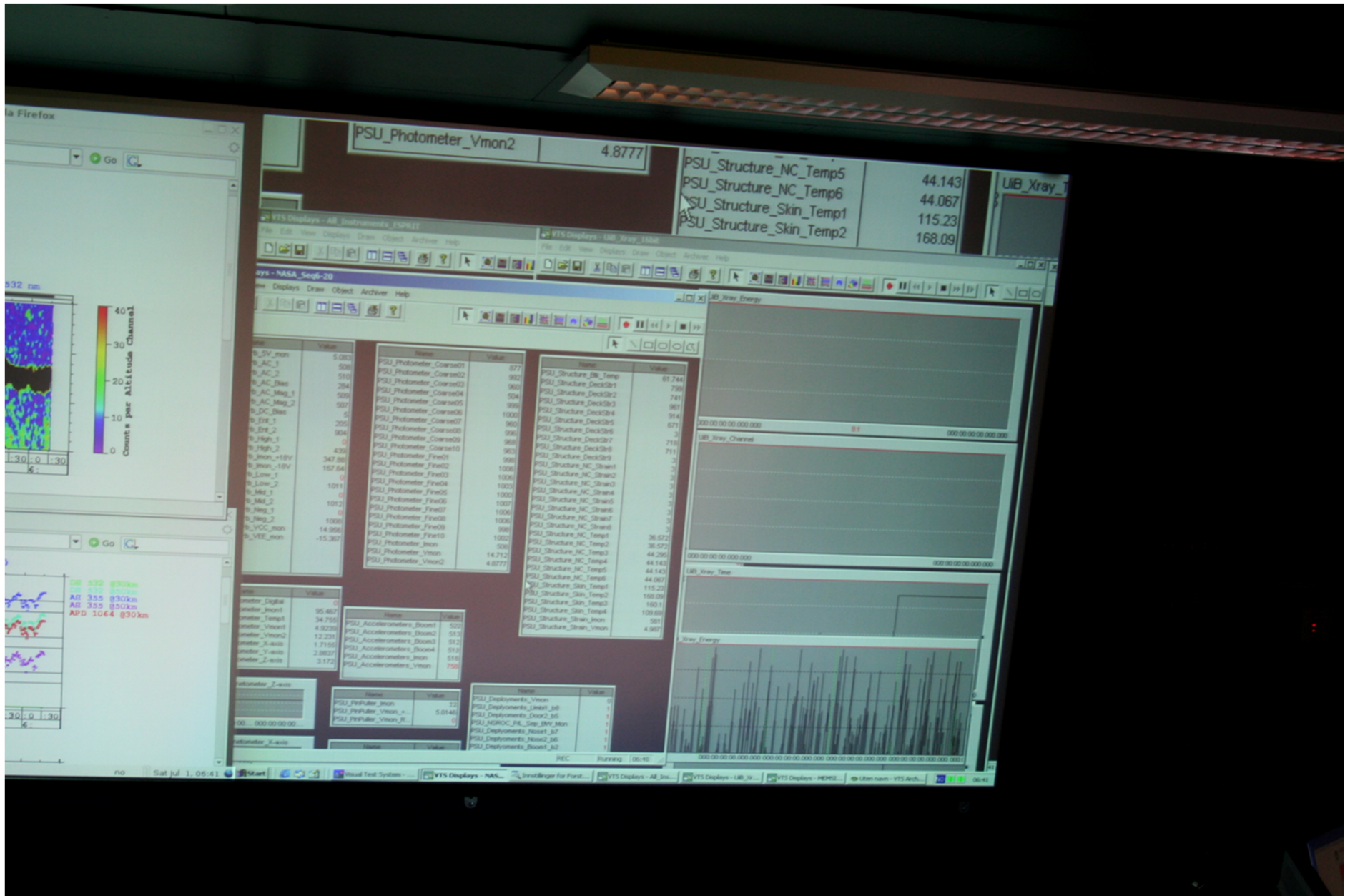


T = 0
ESPRIT
0839 LT
1 July 2006
Andoya Rocket Range







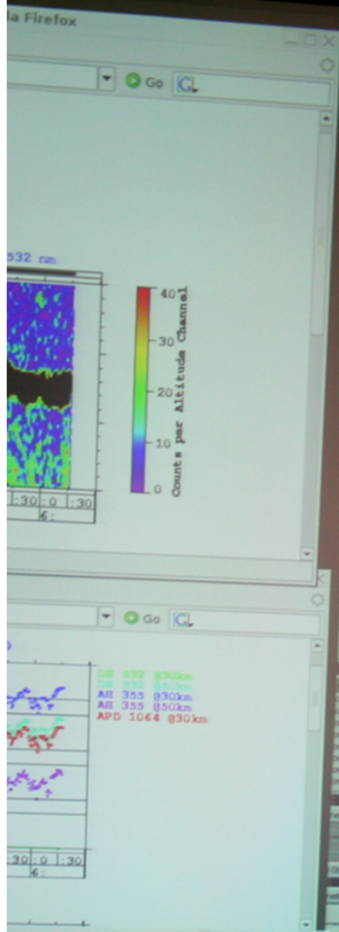


PSU_Photometer_Vmon2 4.8777

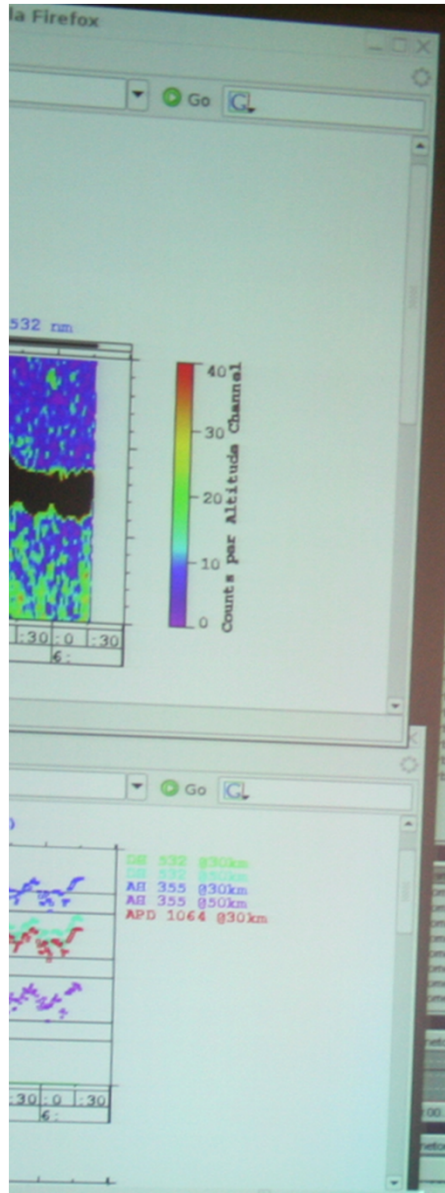
PSU_Structure_NC_Temp5 44.143
PSU_Structure_NC_Temp6 44.067
PSU_Structure_Skin_Temp1 115.23
PSU_Structure_Skin_Temp2 168.09

LiB_Xray_T

Name	Value	Name	Value	Name	Value
PSU_Photometer_Coarse01	877	PSU_Structure_Bk_Temp	61.744	PSU_Structure_Deck01	796
PSU_Photometer_Coarse02	962	PSU_Structure_Deck02	741	PSU_Structure_Deck03	901
PSU_Photometer_Coarse03	962	PSU_Structure_Deck04	914	PSU_Structure_Deck05	671
PSU_Photometer_Coarse04	504	PSU_Structure_Deck06	718	PSU_Structure_Deck07	718
PSU_Photometer_Coarse05	998	PSU_Structure_Deck08	711	PSU_Structure_Deck09	3
PSU_Photometer_Coarse06	1000	PSU_Structure_NC_Strain1	3	PSU_Structure_NC_Strain2	3
PSU_Photometer_Coarse07	996	PSU_Structure_NC_Strain3	3	PSU_Structure_NC_Strain4	3
PSU_Photometer_Coarse08	996	PSU_Structure_NC_Strain5	3	PSU_Structure_NC_Strain6	3
PSU_Photometer_Coarse09	996	PSU_Structure_NC_Strain7	3	PSU_Structure_NC_Strain8	3
PSU_Photometer_Coarse10	963	PSU_Structure_NC_Temp1	36.572	PSU_Structure_NC_Temp2	36.572
PSU_Photometer_Fine01	998	PSU_Structure_NC_Temp3	44.296	PSU_Structure_NC_Temp4	44.143
PSU_Photometer_Fine02	998	PSU_Structure_NC_Temp5	44.143	PSU_Structure_NC_Temp6	44.067
PSU_Photometer_Fine03	1000	PSU_Structure_Skin_Temp1	115.23	PSU_Structure_Skin_Temp2	168.09
PSU_Photometer_Fine04	1000	PSU_Structure_Skin_Temp3	168.09	PSU_Structure_Skin_Temp4	109.89
PSU_Photometer_Fine05	1000	PSU_Structure_Strain_mon	591	PSU_Structure_Strain_Vmon	4.987
PSU_Photometer_Fine06	1007				
PSU_Photometer_Fine07	1006				
PSU_Photometer_Fine08	1006				
PSU_Photometer_Fine09	998				
PSU_Photometer_Fine10	1002				
PSU_Photometer_Imon	986				
PSU_Photometer_Vmon	14.712				
PSU_Photometer_Vmon2	4.8777				







PSU_Photometer_Vmon2 4.8777

PSU_Structure_NC_Temp5 44.143
 PSU_Structure_NC_Temp6 44.067
 PSU_Structure_Skin_Temp1 115.23
 PSU_Structure_Skin_Temp2 168.09

VTS Displays - All_Instruments_ESPRIT
 VTS Displays - LIB_Xray_1866
 VTS Displays - NASA_Seq6-20
 VTS Displays - LIB_Xray_Energy

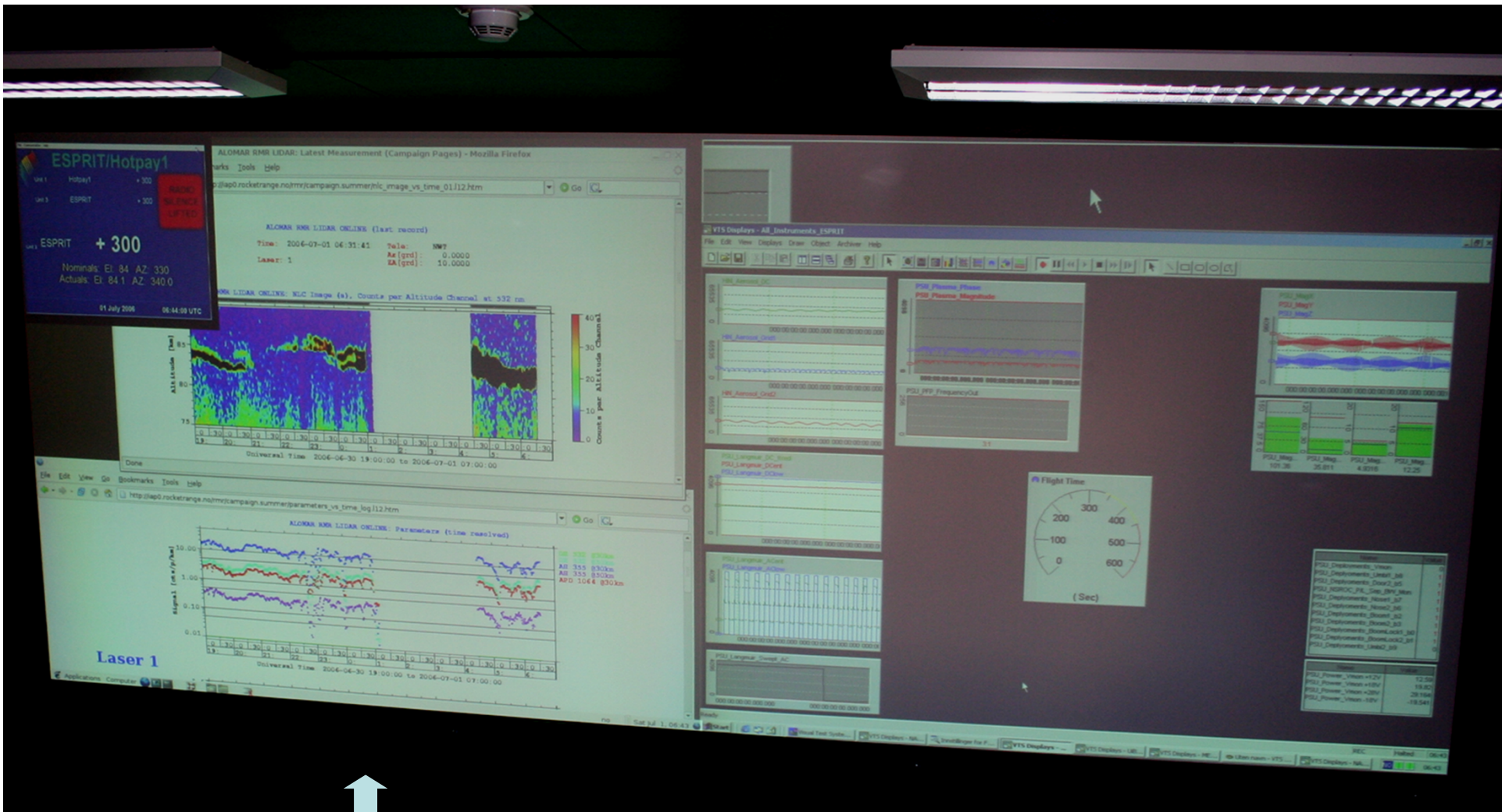
Name	Value	Name	Value	Name	Value
b_SV_mon	5.083	PSU_Photometer_Coarse01	877	PSU_Structure_Blk_Temp	61.744
b_AC_1	508	PSU_Photometer_Coarse02	992	PSU_Structure_DeckStr1	799
b_AC_2	510	PSU_Photometer_Coarse03	960	PSU_Structure_DeckStr2	741
b_AC_Bias	284	PSU_Photometer_Coarse04	504	PSU_Structure_DeckStr3	961
b_AC_Mag_1	509	PSU_Photometer_Coarse05	999	PSU_Structure_DeckStr4	914
b_AC_Mag_2	507	PSU_Photometer_Coarse06	1000	PSU_Structure_DeckStr5	671
b_DC_Bias	5	PSU_Photometer_Coarse07	960	PSU_Structure_DeckStr6	3
b_Ent_1	205	PSU_Photometer_Coarse08	994	PSU_Structure_DeckStr7	718
b_Ent_2	904	PSU_Photometer_Coarse09	968	PSU_Structure_DeckStr8	3
b_High_1	0	PSU_Photometer_Coarse10	963	PSU_Structure_DeckStr9	711
b_High_2	439	PSU_Photometer_Fine01	998	PSU_Structure_NC_Strain1	3
b_mon_18V	347.88	PSU_Photometer_Fine02	1008	PSU_Structure_NC_Strain2	3
b_mon_18V	167.64	PSU_Photometer_Fine03	1006	PSU_Structure_NC_Strain3	3
b_Low_1	0	PSU_Photometer_Fine04	1003	PSU_Structure_NC_Strain4	3
b_Low_2	1011	PSU_Photometer_Fine05	1000	PSU_Structure_NC_Strain5	3
b_Mid_1	0	PSU_Photometer_Fine06	1007	PSU_Structure_NC_Strain6	3
b_Mid_2	1012	PSU_Photometer_Fine07	1006	PSU_Structure_NC_Strain7	3
b_Neg_1	0	PSU_Photometer_Fine08	1008	PSU_Structure_NC_Strain8	3
b_Neg_2	1008	PSU_Photometer_Fine09	998	PSU_Structure_NC_Temp1	36.572
b_VCC_mon	14.956	PSU_Photometer_Fine10	1002	PSU_Structure_NC_Temp2	36.572
b_VEE_mon	-15.367	PSU_Photometer_Vmon	508	PSU_Structure_NC_Temp3	44.296
		PSU_Photometer_Vmon2	14.712	PSU_Structure_NC_Temp4	44.143
			4.8777	PSU_Structure_NC_Temp5	44.143
				PSU_Structure_Skin_Temp1	115.23
				PSU_Structure_Skin_Temp2	168.09
				PSU_Structure_Skin_Temp3	168.09
				PSU_Structure_Skin_Temp4	109.69
				PSU_Structure_Strain_Vmon	581
					4.987

Name	Value	Name	Value
ometer_Digital	0	PSU_Accelerometers_Boom1	522
ometer_Inson1	95.487	PSU_Accelerometers_Boom2	513
ometer_Temp1	34.755	PSU_Accelerometers_Boom3	512
ometer_Vmon1	4.9239	PSU_Accelerometers_Boom4	512
ometer_Vmon2	12.231	PSU_Accelerometers_Inson	518
ometer_X-axis	1.7155	PSU_Accelerometers_Vmon	758
ometer_Y-axis	2.8837		
ometer_Z-axis	3.172		

Name	Value	Name	Value
PSU_PinPuller_Inson	12	PSU_Deployments_Vmon	0
PSU_PinPuller_Vmon_+	5.0146	PSU_Deployments_Unbit_b6	1
PSU_PinPuller_Vmon_R	0	PSU_Deployments_Door2_b5	1
		PSU_NEROC_PIL_Sep_BN_Mon	1
		PSU_Deployments_Nose1_b7	1
		PSU_Deployments_Nose2_b6	1
		PSU_Deployments_Boom1_b2	1

REC Running | 06:40

T + 300 sec



↑
NLC

ALOMAR RMR LIDAR ONLINE (last record)

Time: 2006-07-01 06:58:21 Tele: NWT
Laser: 1 Az [grd]: 0.0000
 ZA [grd]: 10.0000

ESPRIT Launch
06:39:00 UT

ALOMAR RMR LIDAR ONLINE: NLC Image (a), Counts per Altitude Channel at 532 nm

